

REHOBOTH EDUCATION CENTER

Serving the least reached in TANZANIA through Christian education

A LITTLE ABOUT US

Rehoboth Education Center (REC) was founded in 2013 in Dar Es Salaam, Tanzania out of a need for an education system that addresses the challenges of the 21st Century. At REC we use an individualized curriculum that encourages a spirit of excellence, goal setting, instills godly character, while respecting and nurturing individual differences.

We are also passionate about discipling our students in the ways of Jesus and giving them a solid foundation in the Word of God. We also see the school as a way to serve poor communities and be a light in dark places.



SERVANTHOOD

LEADERSHIP

STEWARDSHIP



STORIES OF IMPACT

"My son Herbert has dislexia and I struggled to find a school that could help him. Since he started attending Rehoboth he has been doing well. The combination of the individualized Christian curriculum, the positive atmosphere, and the special attention Herbert is able to receive has been so good for him. I am so thankful for Rehoboth Christian School."

-Herbert's Father

"When Elizabeth was sick there was no option for her in the traditional school system here. After she started attending Rehoboth we began to see a huge change in our daughter. She was excelling academically and growing in her faith in God. We were also amazed how she began to improve from her sickness. We are so grateful to God for Rehoboth Christian School."

-Elizabeth's Mom

MEET OUR LEADERSHIP TEAM



**Richard &
Verena**
Administrators



Dao & Edith
Dao- Principle
Edith-Assistand Principal



Deogratis
Board Member



Florentina
Board member



**Daniel &
Dativa**
Board Chair



**Deokary &
Crecencia**
Board members

BUILDING PROJECT

WE NEED TO BUILD A NEW SCHOOL!

The facility we have been renting can no longer accommodate our rapidly growing school.

We have already acquired 15 acres of land and have been working with construction engineers to develop a detailed construction plan and budget.

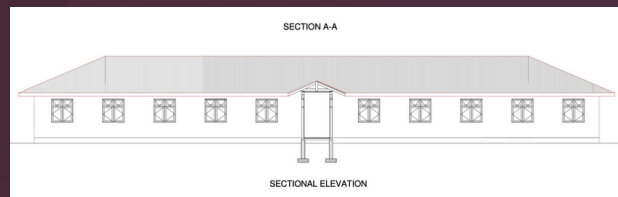
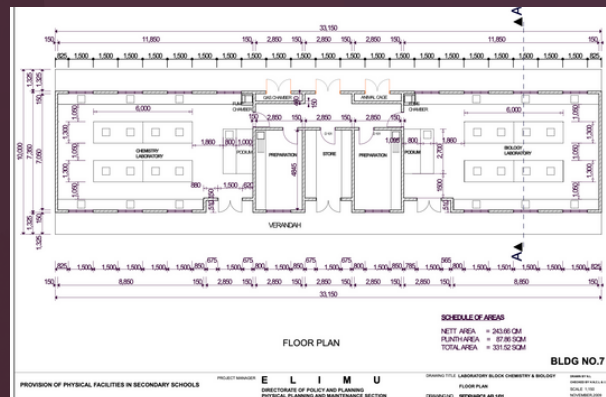
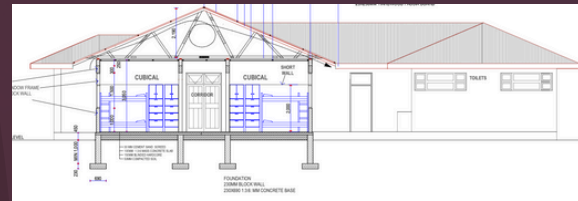
Because this is a massive project we have broken it down into 5 phases.



PHASE 1

- 3 classrooms
- Admin block
- Bathrooms
- 2 dormitories (boys, girls)
- Kitchen
- School bus
- Water supply
- Playground
- Electricity installation
- 1 staff house & staff bathroom
- Security wall around school property

PHASE 1 TOTAL=
\$214,000 USD



CONNECT WITH US



Thank you for
your interest
in partnering
with us!

VIDEO



DONATE

DONATE CRYPTO

CONTACT

email: info@abideministries.org
website: www.abideministries.org